

FALL PRODUCT PROGRAM JULIETTE GUIDE

girl scouts
of the sierra nevada

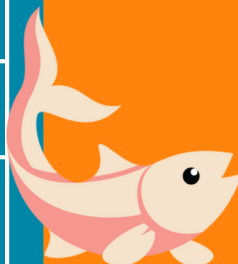
Fall 2025 Important Dates

Contact your Service Unit Rep SUPSC will have order card!	Mid-End Sept.
Fall Product Program begins!	Oct. 1
Last day for in-person and online girl- delivered ordering	Oct. 31
Adult/caregiver deadline for entering in-person orders into M2 system	Oct. 31
Deadline for payment to GSSN Shop	Oct. 31
Products arrive to Service Units	Nov. 12-15

Did you know...

As an integral part of a Girl Scouts' journey toward leadership, she'll be learning and developing:

Goal Setting
Decision Making
Money Management
People Skills
Business Ethics



An easy, fun way to earn startup funds for your troop activities at the beginning of the Girl Scout year - don't miss out on all the fun!

Rewards

Girl Scout rewards can be found on the back of the order card.

Participants should register online to track reward progress and select rewards as they are earned!

Visit www.gsnutsandmags.com/gssn

Use the QR Code, enter the URL above or click the link from the council website. Have your troop number ready and follow the prompts to participate in the online Fall Product Program. My troop number is 99+Service Unit (99604)



Build your site

To customize your site, you can create an avatar that looks like you and also record a personalized message for your avatar to deliver to friends and family. Don't miss all of the ways you can earn virtual rewards when you complete various setup steps for your personalized site.



Contact friends and family

Friends and family can easily help you reach your goals when they shop online! Get started by sending emails through the M2 system. Your supporters will see your goal and hear your avatar deliver a message customized by you in your voice. Don't forget that you can also share your link to shop on social media or send a text, with the help of your parent/adult. Please follow current GSUSA guidelines for online sales and marketing.



Order Card Entry:

- Girl Scouts/caregivers have until Oct. 31 to enter order card items into the M2 system and select rewards. GSSN cannot accommodate late orders.
- How to enter orders:
 - Choose Paper Order Entry from your dashboard.
 - Click on the plus sign next to the Girl Scout's name to enter or edit orders. DO NOT enter online girl delivered product.
 - Enter total ordered items by variety from order card. Click Update and make sure totals match the order card.
 - There is no submit button as orders are transmitted for fulfillment automatically on Oct. 24 after the system is locked and council submits orders.

Tips!

- Only order the exact number of products sold. Product cannot be returned to GSSN.
- Rewards are automatically calculated upon order items entered but could take up to one hour to update after adjustments have been made to products sold



Care to Share

- Care to Share is a great way for customers to give back to the community by donating products.
- Care to Share items will be donated to VA of the Sierra Nevada. For each \$7 donation, veterans and active-duty service members will be sent one can of candy/nuts.
- Donations are credited to the participant's sales and troops receive 18% in proceeds per donation sold. Girl Scouts earn the Care to Share patch by receiving five or more donations.



Juliette Banking and Payment Collection

- Payment (cash, check, or electronic) is collected from customers upfront at the time of an in-person order.
- Should you choose to accept checks, they should be made payable to the Girl Scouts of the Sierra Nevada and should have your Girl Scout's name in the memo line. GSSN recommends to only accept checks from customers you know and are comfortable contacting if issue occurs.
- All funds are paid to the GSSN Shop. Payments can be handled over the phone for Girl Scouts outside of Reno.
- Funds are due with orders on Oct. 31.
- If a Girl Scout does not turn in money to GSSN by October 31, her order will not be placed.
- Online sales/orders will reflect as paid in the M2 system.
- At the end of the sale, Juliettes will receive a credit in the Juliette fund. Juliette's can access these funds to pay for memberships, uniforms, badges, events, and GSSN trips.

Earn Custom Patches

Fall Personalized Patch

- Create your avatar in the M2 system
- Send 18+ emails
- Use the "Share My Site" function
- Sell \$375+ in total Fall sales

Girl Scout Cookie Crossover Personalized Patch

- Create your avatar
- Send 18+ emails
- Use the "Share My Site" function
- 250+ packages of cookies during the 2026 Girl Scout Cookie Program



We Appreciate You! Thank you for being an integral part of the Fall Product Program
Questions? Email girlscoutshelp@gssn.org

